

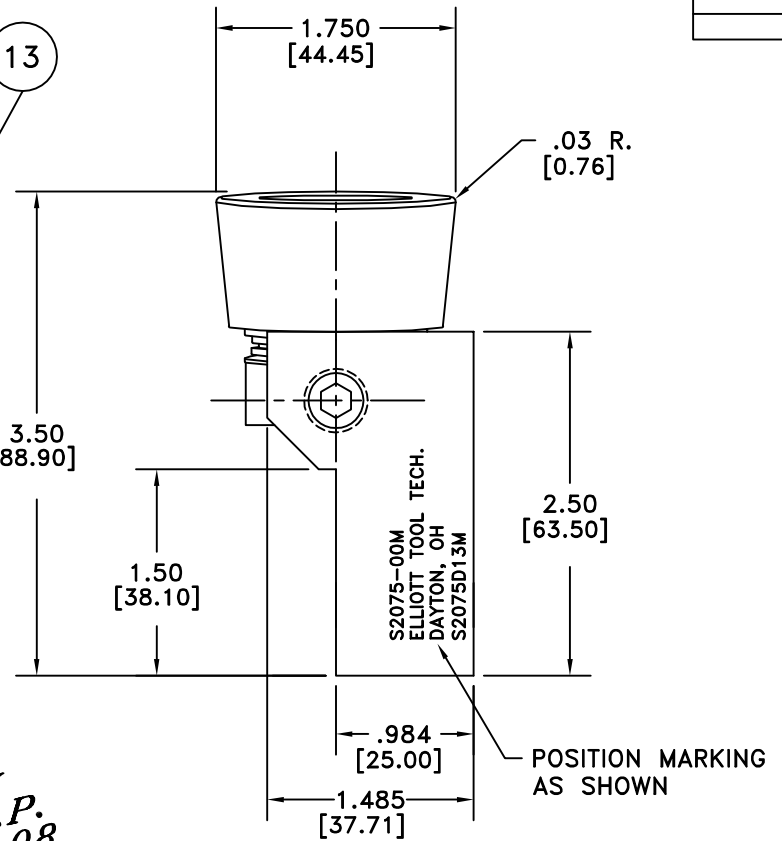
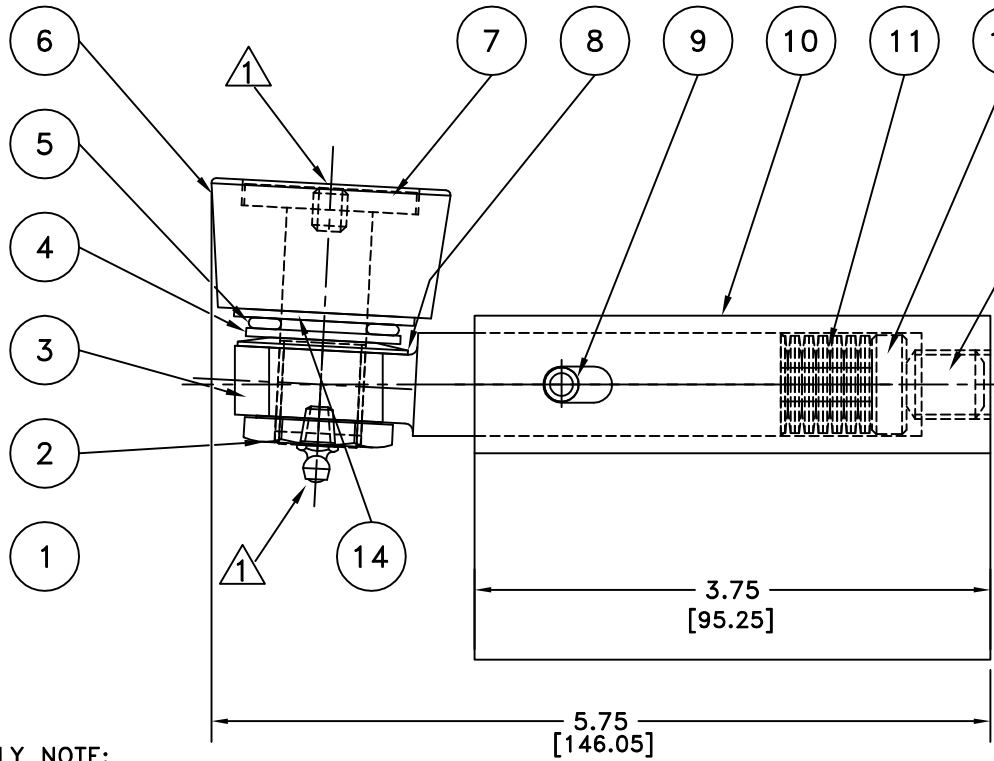
S2075-00M

SUPERSEDED BY PART NO.

SUPERSEDES

⚠ NOTE: LUBE FITTING AND SET SCREW IN THE AXLE CAN BE SWITCHED IF IT IS NECESSARY. GREASE TOOL BEFORE SHIPPING.

USED ON:	PART NO. S2075-00M
SHEET NO. _____ OF _____	ENG. CHANGE NO. _____



ASSEMBLY NOTE:
ASSEMBLE TOOL WITH NO PRELOAD ON THE SPRING.
JUST TIGHTEN THE SET SCREW TO REMOVE END PLAY.

14	BEARING RACE	S2075D17	1	
13	HEX. SOC. SET SCREW	128B	1	
12	SLUG	ED18	1	
11	BELLEVILLE SPRINGS	579-44	13	
10	TOOL HOLDER	S2075D13M	1	
9	PIN	P8386-24	1	
8	BELLEVILLE SPRING	579-94	1	
7	AXLE	S2075D10	1	
6	ROLL	S2075-05	1	
5	THRUST BEARING	P1067-1	1	
4	THRUST RACE	P1067K	1	
3	SHANK	S2075D3	1	
2	LOCK NUT	PC76-0050818	1	
1	ASSEMBLED TOOL	S2075-00M	~	
	PART NAME	PART NUMBER	REQ.	CHG. OUT

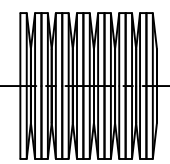
SPRING FORCE INFORMATION	
DET.8	
DEFLECTION	FORCE
.011[0.279]	95 LBS.
.022[0.558]	145 LBS.
.033[0.838]	165 LBS.
.044[1.117]	170 LBS.
DET. 11	
DEFLECTION	FORCE
.064[1.62]	65 LBS
.127[3.22]	119 LBS
.191[4.85]	165 LBS.
.250[6.35]	208 LBS

OK S.G.P. 7.1.08

MARK TOOL ABOVE S2075D13M:
S2075-00M
ELLIOTT TOOL TECH.
DAYTON, OH



NOTE:
BELLEVILLE SPRINGS DET.11
TO BE STACKED IN SERIES.



THIS DRAWING CONTAINS INFORMATION OF A PROPRIETARY NATURE AND IS ISSUED FOR REFERENCE USE ONLY AND MAY NOT BE COPIED, REPRODUCED OR USED TO MANUFACTURE ANYTHING WITHOUT WRITTEN PERMISSION.

NAME SINGLE ROLL - CARBIDE BURNISHING TOOL	
DR. BY: <i>S.G. Poettinger 6.25.08</i>	TOOL NO.
CHK. BY: <i>R.T. (06-26-08)</i>	PROJECT NO. Q14358KM
SCALE = N.T.S.	PART NO. S2075-00M

WEIGHT 3.953 LBS. VOLUME 37.73 IN.³